

**KEY NOTES:**

- (E-1) SAMPLE POINT
- (E-2) 1 1/2" QUICK DISCONNECT BALL VALVE & CHECK VALVE TO PREVENT POSSIBLE AIR COMPRESSOR CONNECTIONS
- (E-3) PANEL ENCLOSURES SHALL BE STAINLESS STEEL, HOFFMAN 2/ALUMOSLIP (FLUSH MOUNTED)
- (E-4) FLEX CONNECTION
- (E-5) BALL VALVE (TYPICAL)
- (E-6) ELECTRIC UNION (TYPICAL)
- (E-7) MANUAL DRAIN RUN LINE TO FLOOR DRAIN
- (E-8) AUTOMATIC DRAIN VALVE AND DRAIN LINE TO FLOOR DRAIN
- (E-9) SAME AS (E-3) ACCEPT SURFACE MOUNTED IN MECHANICAL EQUIPMENT ROOM
- (E-10) RUN 1" HELIX LINE FROM EXTERIOR WALL APPROX. 6'-0" A.F.F. AND TURN DOWN WITH ANEITY DEGREE ELBOW
- (E-11) RUN 1" SLOWOFF LINE FROM EXTERIOR WALL (AS NOTED) AND TURN DOWN WITH ANEITY DEGREE ELBOW
- (E-12) PROVIDE PIPING AND EQUIPMENT WITH SEISMIC ZONE 4 RESTRAINTS PER UNIFORM BUILDING CODE
- (E-13) CAP 1 1/2" COMPRESSED AIR FOR FURNACE SHOP AIR

**COMPRESSED AIR EQUIPMENT SCHEDULE**

**AC-1**  
 2 STAGE AIR COOLED OIL-FREE ROTARY AIR COMPRESSOR. UNIT SHALL PROVIDE 110 CFM (FPM) AT 125 PSIG. AIR COMPRESSOR SHALL INCLUDE 30 HP MOTOR, MAGNETIC STARTER, AIR HEAT EXCHANGER, AFTER COOLER AND WATER SEPARATOR, ELECTRONIC MOTOR PROTECTOR CONTROLLER AND SHALL OPERATE AT 400-3 AND ELECTRICAL PANEL.  
 ATLAS COPCO MODEL 212-125. PROVIDE FREEZE PROTECTION AS FOLLOWS:  
 A. CONDENSE HEATER RATED AT 1000 AND 1000 IN CONTROL PANEL WITH THERMOSTAT.  
 B. OIL SHAP HEATER RATED AT 115W AND 1000 WITH THERMOSTAT.  
 C. OIL AND WATER HEATER RATED AT 115W AND 1000 EXPANDING FROM MOTOR HOUSING.  
 D. OIL AND WATER HEATER AND DRAIN LINES ARE SHIPPED WITH HEAT TAPE AND COVERED WITH INSULATION.  
 E. INSULATION MEDIUM TRAP WRAPPED WITH HEAT TRACING TAPE AND COVERED WITH PROTECTIVE INSULATION.

**RECOVER TANK**  
 120 GALLON STAINLESS STEEL EPOXY COATED EXTERIOR RECOVER WITH 150 PSIG SAFETY RELIEF VALVE, INSULATION PORTS AND AIR GAUGE, END BACK, AND AUTOMATIC DRAIN VALVE. DESIGN PRESSURE = 200 PSIG, MANUFACTURE ELITE SERIES MODEL 3225.

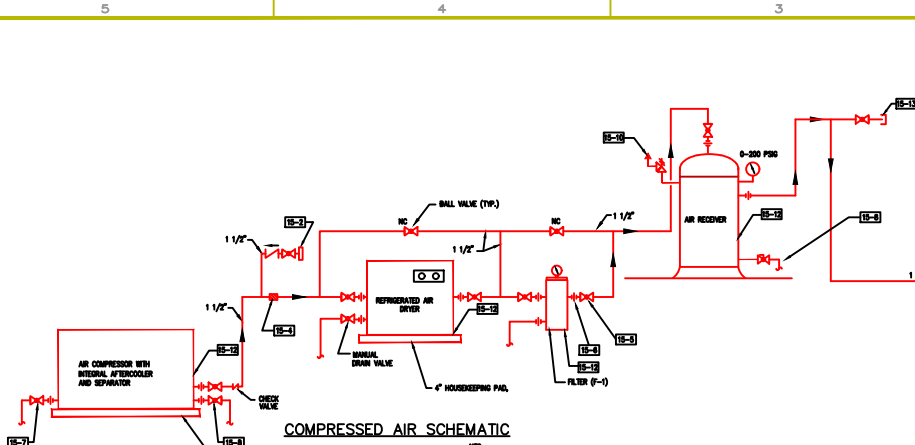
**REGENERATED DRYER**  
 DRYER SHALL PROVIDE 110 SCFM OF AIR AT A Dew POINT OF 39 F. DRYER SHALL INCLUDE AN INLET TEMPERATURE GAUGE, REGENERATOR DISCHARGE PRESSURE GAUGE, AND THERMAL FOR SERVICE ALARM. UNIT SHALL OPERATE AT 110 PSI, 400-3-40 ELECTRICAL PANEL, ATLAS COPCO P/N.

**FILTER (E-1)**  
 PARTICULATE COLLECTOR AND ADSORPTION (2 IN 1) 50MM FILTER. MAXIMUM PRESSURE DROP OF 1 PSI AT 110 SCFM. FILTRATION EFFICIENCY SHALL BE IN EXCESS OF 99.99% AT 1.0 MICRON PARTICLE SIZE. ATLAS COPCO MODEL 3225.

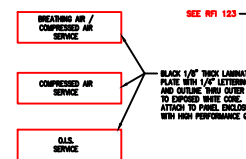
**BREATHING AIR PURIFIER**  
 PURIFIER SHALL PROVIDE A MINIMUM OF 60 SCFM OUT WITH 110 SCFM IN AT 125 PSIG. UNIT SHALL OPERATE AT 110-1-40 ELECTRICAL PANEL, WITH ROOM 4 PANEL, FILTRATION BOTTLES, CATALYST MOUNTS, DUAL TOWER REGENERATIVE DRYER, AND CARBON MONOXIDE MONITOR MOUNTED TO PACKAGE. MANUFACTURE MODEL 100A.

**COMBINATION FILTER/REGULATOR**  
 COMBINATION FILTER/REGULATOR SHALL BE 1" SIZE REGULATOR 9-30 WITH GAUGE AND AUTOMATIC DRAIN TRAP. 1 1/2" SIZE REGULATOR 9-40 WITH GAUGE AND AUTOMATIC DRAIN TRAP.

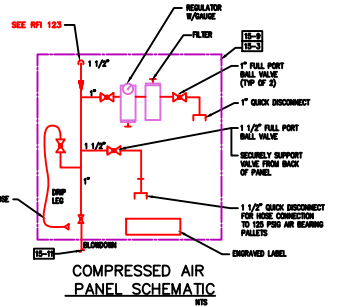
**NOTE:** COMPRESSED AIR / BREATHING AIR LINES AND VALVING SHALL BE COMMERCIAL CLEANED TO MIL. STANDARD 1346C LEVEL 300 F.



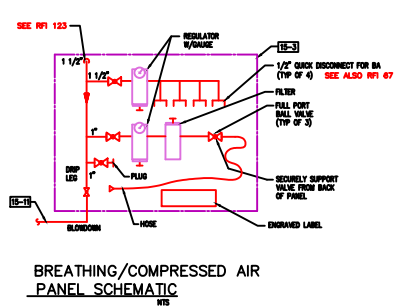
**COMPRESSED AIR SCHEMATIC**



**ENGRAVED LABELS**



**COMPRESSED AIR PANEL SCHEMATIC**



**BREATHING/COMPRESSED AIR PANEL SCHEMATIC**



BRPH ARCHITECTS \* ENGINEERS, INC.  
 MELBOURNE / TALLAHASSEE, FLORIDA  
 1115 S. W. 15th Avenue, Tallahassee, Florida 32304  
 TEL: (904) 833-3300 FAX: (904) 833-3301  
 WWW.BRPH.COM

KODIAK LAUNCH COMPLEX  
 NARROW CAPE, KODIAK ISLAND, ALASKA  
 PAYLOAD PROCESSING FACILITY  
 COMPRESSED AIR SCHEMATICS

DATE: 3-28-97  
 DRAWN BY: F. FARMER  
 CHECKED BY: E. HUBEL  
 DESIGNED BY: L. HUBER  
 SHOP CODE: 3007.22-1000-1  
 PROJECT NO: 3007.22  
 SHEET: PP-4